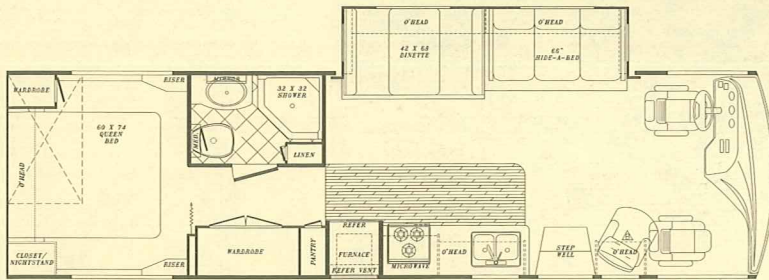


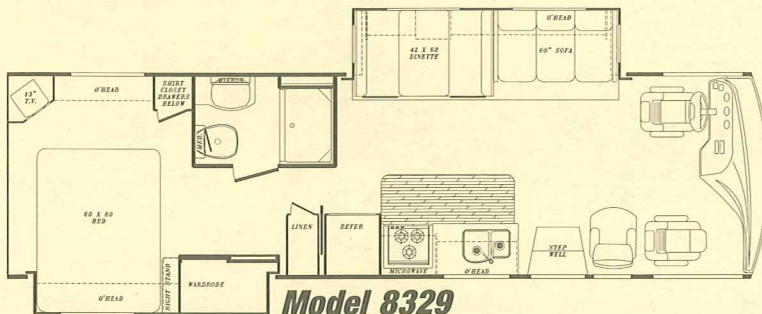
# Sun Sport

# 2001 GAS MODELS



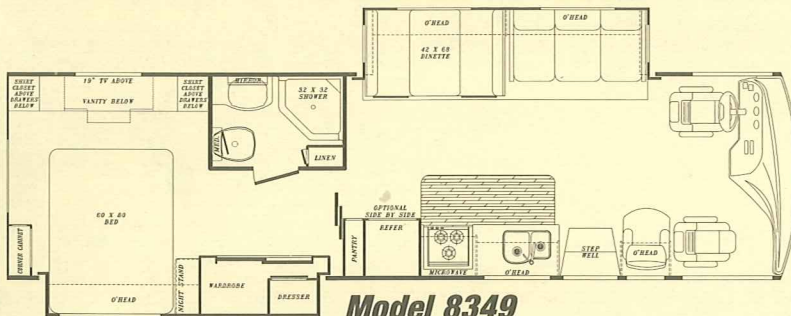
**Model 8325**

|                    |         |
|--------------------|---------|
| Engine             | 454     |
| GVWR               | 18,000  |
| Wheelbase          | 190"    |
| Ext. Length        | 32'-8"  |
| Ext. Height w/AC   | 11'-8"  |
| Ext. Width         | 101"    |
| Int. Height        | 83"     |
| Int. Width         | 97"     |
| Fresh              | 60 gal. |
| Grey               | 50 gal. |
| Black              | 50 gal. |
| Water Heater w/DSI | 6 gal.  |
| LP Gas Tanks       | 85 lbs. |
| Fuel Tank (Gal.)   | 75      |
| Furnace (BTU's)    | 40,000  |



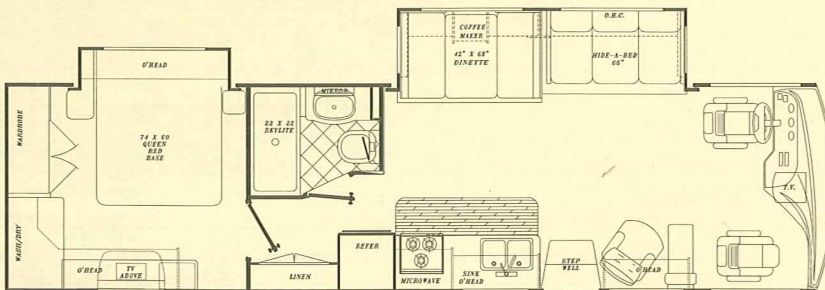
**Model 8329**

|                    |         |
|--------------------|---------|
| Engine             | 454     |
| GVWR               | 18,000  |
| Wheelbase          | 208"    |
| Ext. Length        | 32'-0"  |
| Ext. Height w/AC   | 11'-8"  |
| Ext. Width         | 101"    |
| Int. Height        | 83"     |
| Int. Width         | 97"     |
| Fresh              | 60 gal. |
| Grey               | 50 gal. |
| Black              | 50 gal. |
| Water Heater w/DSI | 6 gal.  |
| LP Gas Tanks       | 85 lbs. |
| Fuel Tank (Gal.)   | 75      |
| Furnace (BTU's)    | 40,000  |



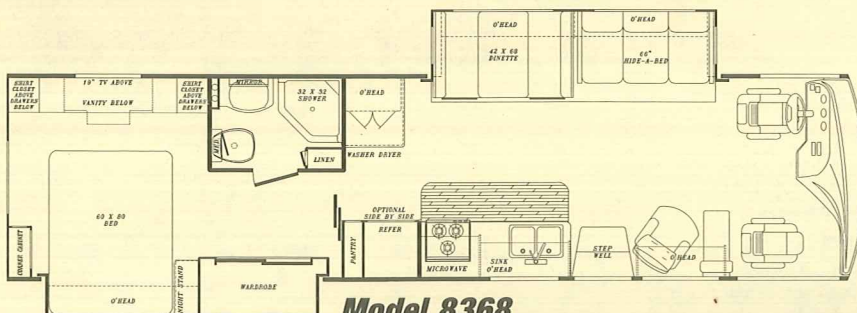
**Model 8349**

|                    |         |
|--------------------|---------|
| Engine             | V10     |
| GVWR               | 20,500  |
| Wheelbase          | 228"    |
| Ext. Length        | 33'-6"  |
| Ext. Height w/AC   | 11'-8"  |
| Ext. Width         | 101"    |
| Int. Height        | 83"     |
| Int. Width         | 97"     |
| Fresh              | 60 gal. |
| Grey               | 50 gal. |
| Black              | 50 gal. |
| Water Heater w/DSI | 6 gal.  |
| LP Gas Tanks       | 85 lbs. |
| Fuel Tank (Gal.)   | 75      |
| Furnace (BTU's)    | 40,000  |



**Model 8354**

|                    |         |
|--------------------|---------|
| Engine             | V10     |
| GVWR               | 20,500  |
| Wheelbase          | 228"    |
| Ext. Length        | 34'-6"  |
| Ext. Height w/AC   | 11'-8"  |
| Ext. Width         | 101"    |
| Int. Height        | 83"     |
| Int. Width         | 97"     |
| Fresh              | 60 gal. |
| Grey               | 50 gal. |
| Black              | 50 gal. |
| Water Heater w/DSI | 6 gal.  |
| LP Gas Tanks       | 85 lbs. |
| Fuel Tank (Gal.)   | 75      |
| Furnace (BTU's)    | 40,000  |



**Model 8368**

|                    |         |
|--------------------|---------|
| Engine             | V10     |
| GVWR               | 20,500  |
| Wheelbase          | 228"    |
| Ext. Length        | 36'-8"  |
| Ext. Height w/AC   | 11'-8"  |
| Ext. Width         | 101"    |
| Int. Height        | 83"     |
| Int. Width         | 97"     |
| Fresh              | 60 gal. |
| Grey               | 50 gal. |
| Black              | 50 gal. |
| Water Heater w/DSI | 6 gal.  |
| LP Gas Tanks       | 85 lbs. |
| Fuel Tank (Gal.)   | 75      |
| Furnace (BTU's)    | 40,000  |

# SPECIFICATION INFORMATION

*Sun Sport*



## INTERIOR & DECOR

- Nearly 7' of Interior Ceiling Height
- Residential Style Cabinetry
- Natural Oak Cabinet Doors
- Solid Surface Countertops w/Deep Solid Surface Sink and Deluxe Sprayer Faucet (Opt.)
- 22" Metal Drawer Guides w/Nylon Rollers
- Silverware Drawer and Drawer Front
- Windshield Privacy Drape
- Deluxe Furniture
- 3-Way Driver & Passenger Seats
- Deluxe Carpet w/Pad
- Coordinated Bedspread & Shams
- Lighted Closets
- Decorator Mirror (where available)
- Generous Overhead Storage
- Day/Night Shades
- Raised Panel Interior Doors

## APPLIANCES

- 3-Burner High-Performance Range
- Lighted, Power Range Hood
- 2-Door, 2-Way Refrigerator
- Large Microwave Oven (Opt.)

## ELECTRICAL SYSTEMS

- Easy-Access Dual Battery System
- 12-volt, 45-Amp Converter
- Electric Supply Cord
- Electric Overload Protection
- Automotive-Type, Color-Coded Wiring
- Lighted Entry & Aisle Lights
- Optional Reading/Map Lights
- Battery Disconnect

## HEATING, VENTILATION & A/C

- Ducted Furnace w/Elect. Ignition (40,000 BTU's)
- Pre-Wired for Ducted Roof A/C

## EXTERIOR & CONSTRUCTION

- "Cradle of Strength" Construction:
  - Welded Steel Sub-Floor Truss Sys.
  - 1-1/2" Tubular Metal Cage Construction on Sidewalls & Roof
  - Insulated Floors w/Virtually Seamless Weyerhaeuser Structurwood Decking
  - Vacuum-Bond Laminated 2" Thick Sidewall Construction w/Seamless Fiberglass
- High-Density Block Foam Insulation Throughout Sidewalls, Roof & Floor
- Radiused Laminated Rubber Roof w/Tubular Metal Rafters
- Molded Roof Brick Insulation in Roof, Surrounding Ducted Roof A/C Vents
- Heated & Fully Enclosed Holding Tanks
- Automotive-Style Bumpers
- Deluxe Outside Mirrors
- Generous Pass-Through Basement Storage, Including a Full-Width Rear Trunk Area
- Hinged Exterior Storage Doors
- Tri-Mark Exterior Storage Compartment Latches & Locks
- Fully Welded Steel Firewall
- Below Floor Storage Area's are Constructed of Galvanized Steel (not plywood or plastic)
- Deluxe Ext. Paint Graphics w/Tape Accent

## DELUXE STANDARD FEATURES

- 19" Color TV in Front Overhead (N/A 8357)
- Microwave Oven
- 6 Gal. Elect. Ign. Water Heater
- TV Antenna w/Amp and Boost & 2 Jacks
- Spare Tire and wheel covers
- AM/FM Cassette Stereo w/4 Speakers
- Monitor Panel
- Generator Ready
- Converter w/Battery Charger
- Auto Start Switch

## CHASSIS

- FORD - Super Duty w/Triton V-10 and 4-Speed Automatic Transmission
- WORKHORSE - 454 CID V-8 Engine w/Electronically Shifted 4-Speed Auto. Trans. (8325 only)
- Electronic Ignition
- Power Steering and Brakes
- High Capacity Automotive Heater & A/C w/R134 Environmental Refrigerant
- Tilt Steering Wheel
- Cruise Control

## POPULAR OPTIONS

- Driver's Door
- Exterior Radio/Cassette Compartment
- Wood Plank Flooring
- 6-Panel Oak Refrigerator Inlay

## BATH & WATER

- Demand Water System
- City Water Hook-Up
- Tub/Shower (most models)
- Marine Toilet
- Gravity Drains on Fresh Water Lines
- Skydome in Shower (most models)

Visit Our Website At:  
[www.gulfstreamRV.com](http://www.gulfstreamRV.com)

OR CALL:  
**1-800-765-8787**  
ext. 3288

For further information and available floorplan options, contact your local dealer or Gulf Stream Coach, Inc. Gulf Stream Coach, Inc. reserves the right to make changes in prices, colors, materials, components and specifications and to discontinue models at any time without notice or obligation. Gulf Stream Coach, Inc. assumes no responsibility for any error in type or print reproduction of specifications or floorplans in this brochure. SCG 20M 7/00 © 2000 Gulf Stream Coach, Inc. - Nappanee, Indiana



P.O. Box 1005 • Nappanee, IN 46550

YOUR AUTHORIZED DEALER IS: