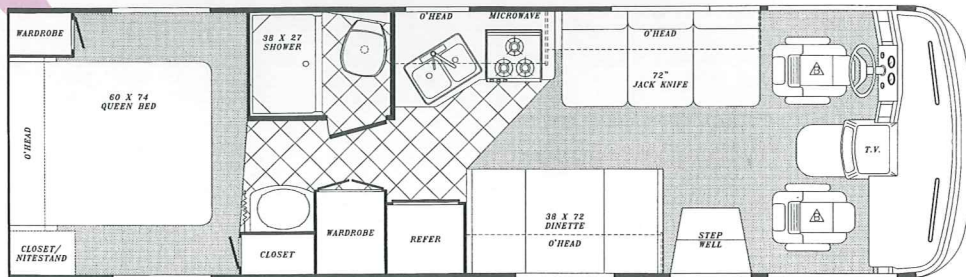


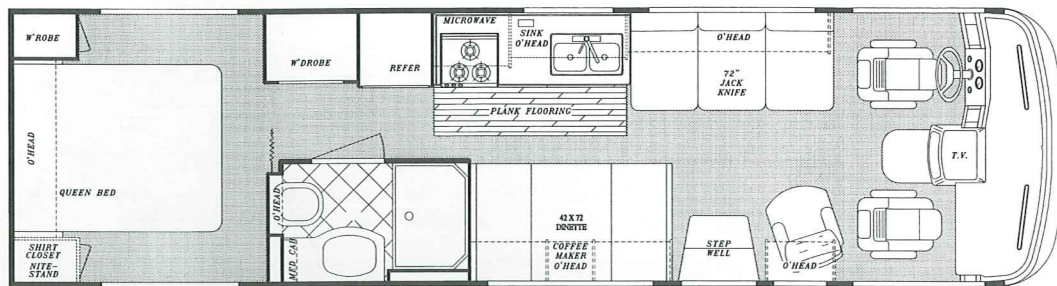
7/99

PALM BREEZE

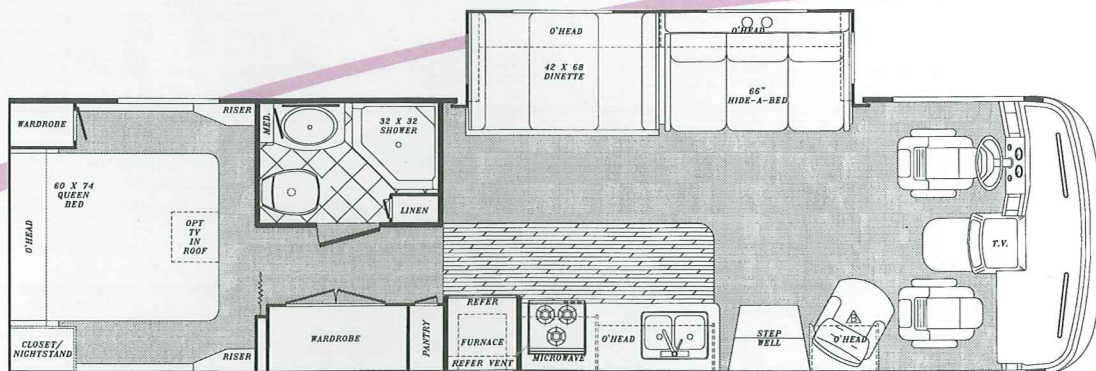
2000



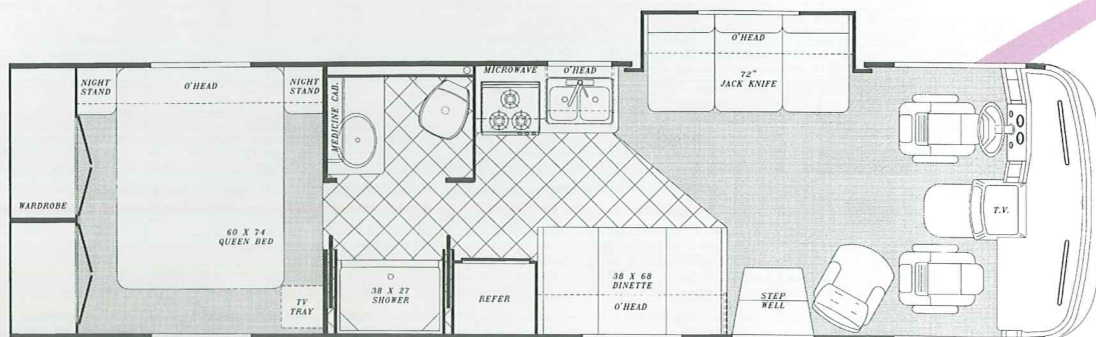
Model 8290 (Approx. 29'-8", 100" wide)



Model 8314 (Approx. 31'-5", 100" wide)



Model 8325 (Approx. 32'-7", 100" wide)



Model 8326 (Approx. 32'-10", 100" wide)



SPECIFICATIONS

Interior & Decor

- Self-Edged & Radius-Cornered Countertops
- Oak Knife Holder in Kitchen Countertop
- Custom Padded Dash w/ Illuminated Gauges
- Windshield Privacy Drape
- Designer Cloth Cockpit Seats
- Upgrade Deluxe Carpet w/Pad
- Deluxe Quality Furniture
- 3-Way Driver Seat
- Coordinated Bedspread
- Decorative Picture at Dinette
- Generous Overhead Storage
- Extra Large Under Bed Storage
- Mid Door Carpeted Stepwell Cover
- Window Valances

Exterior & Construction

- **“Cradle of Strength” Construction:**
 - Tubular Metal Cage Construction
 - Welded Steel Truss Sub-Floor
- Vacuum-Bond Laminated Sidewalls
- Block Foam Insulation in Roof & Sidewalls
- Heated & Fully-Enclosed Holding Tanks
- Tri-Mark Exterior Storage Door Latches & Locks
- Radius Entry Door
- Smooth Fiberglass Exterior
- Automotive Style Aluminum Front Grill
- Tinted Windshield and Windows
- Outstanding Exterior Storage
- Deluxe Outside Mirrors
- Seamless Rubber Roof

Electrical Systems

- On Dash Emergency Start
- Easy-Access Dual Battery System
- 12-Volt, 45-Amp Converter
- Electric Supply Cord
- Electric Overload Protection
- Generator Compartment
- Automotive-Type, Color-Coded Wiring
- 12-Volt Battery Disconnect

Bath & Water

- Demand Water System
- City Water Hook-Up
- Double Stainless Steel Sink
- Tub/Shower combination
- Marine Toilet
- Gravity Drains on Fresh Water Lines

MODEL	8290	8314	8325	8328
FORD CHASSIS:	V-10	V-10	V-10	V-10
Wheelbase	190"	190"	208"	208"
GVWR (lbs.)	15,700	18,000	18,000	18,000
Front Gross Axle Weight Rating	6,000	7,000	7,000	7,000
Rear Gross Axle Weight Rating	11,000	11,000	11,000	11,000
*Exterior Length	29'-8"	31'-5"	32'-7"	32'-10"
*Exterior Height with A/C	11'-11"	11'-11"	11'-11"	11'-11"
Exterior Width	100"	100"	100"	100"
Interior Height	83"	83"	83"	83"
Interior Width	96"	96"	96"	96"
*Fresh Water Tank (Gal.)	60	60	60	60
*Grey Holding Tank (Gal.)	50	50	50	50
*Black Holding Tank (Gal.)	50	50	50	50
Water Heater w/DSI	6 gal.	6 gal.	6 gal.	6 gal.
LP Gas Tank (lbs.)	65	85	85	85
Fuel Tank	75	75	75	75
Furnace (BTU's)	35,000	35,000	35,000	35,000

* Approximate and subject to change without notice.

For further information, contact your local dealer or Gulf Stream. Gulf Stream Coach, Inc. reserves the right to make changes in prices, colors, materials, components and specifications and to discontinue models at any time without notice or obligation. Gulf Stream Coach, Inc. assumes no responsibility for any error in type or print reproduction of specifications or floorplans in this brochure. TP 30M 7/99

Heating, Ventilation & A/C

- 35,000 BTU Ducted Furnace w/Elect. Ign.
- Pre-Wired for Roof A/C

Appliances

- 3-Burner High-Performance Range
- Lighted, Power Range Hood
- 2-Door, 2-Way Refrigerator

Deluxe Standard Features

- 19" Color TV w/Remote, STD. D.S.S. Prep.
- Microwave Oven
- 6 Gal. Elect. Ign. Water Heater
- TV Antenna w/Amp and Boost & 2 Jacks
- Spare Tire
- Wheel Covers
- AM/FM Cassette Stereo w/4 Speakers
- Monitor Panel
- Generator Ready
- Converter w/Battery Charger
- Auto Start Switch

Chassis

- FORD - Super Duty w/Triton V-10 and 4-Speed Automatic Transmission
- Electronic Ignition
- Power Steering and Brakes
- High Capacity Automotive Heater & A/C w/R134 Environmental Refrigerant
- Tilt Steering Wheel
- Cruise Control

Your Dealer:

1-800-765-8787, ext. 3288



P.O. Box 1005 • Nappanee, IN 46550

Visit Our Web Site at:
www.GULFSTREAMCOACH.com