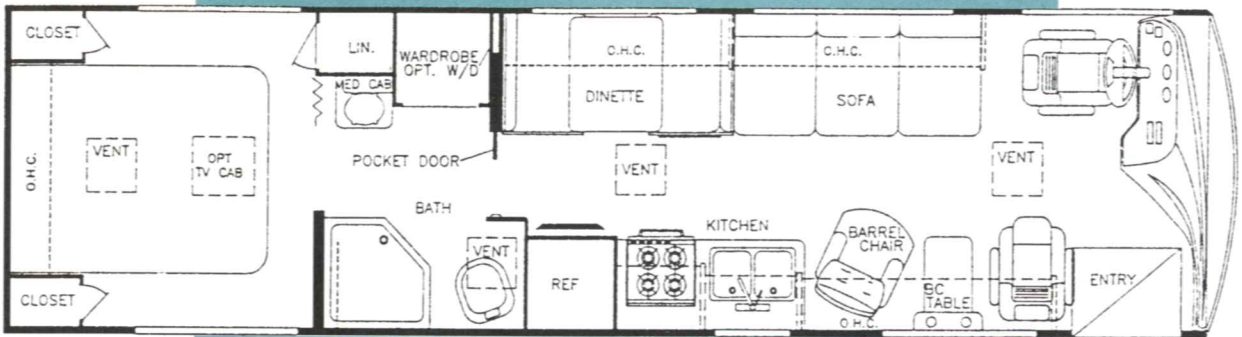


2/9

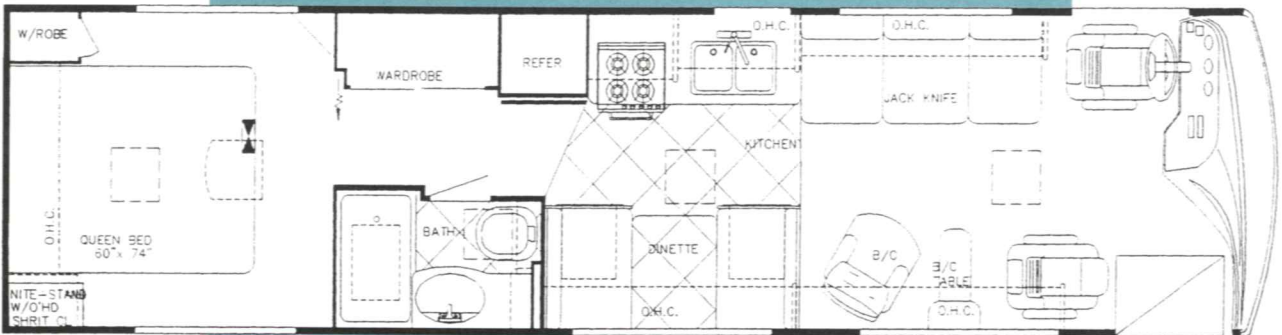
# Sun Voyager®



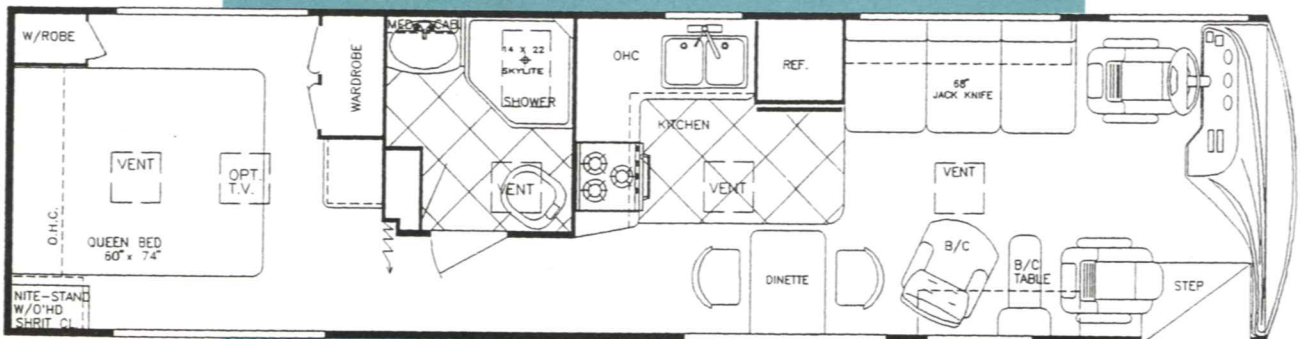
## FLOORPLANS



Model 8293 SYD (Approx. 31'-4", 95" Wide)



Model 8313 SYD (Approx. 33'-8", 95" Wide)



Model 8324 SYD (Approx. 33'-8", 95" Wide)

# SPECIFICATIONS

DIESEL MODELS	8293	8313	8324
<b>SPARTAN Chassis:</b>			
Engine (HP)	210	210/275	210/275
Wheelbase	172"	190"	190"
GVWR (lbs.)	19,000	19,000/23,000	19,000/23,000
Front Gross Axle Wt. Rating	7,000	7,000/8,000	7,000/8,000
Rear Gross Axle Wt. Rating	12,000	12,000/15,000	12,000/15,000
<b>DIMENSIONS:</b>			
Overall Length	31' 4"	33' 8"	33' 8"
Overall Height w/Roof A/C	11' 11"	11' 11"	11' 11"
Overall Width	95"	95"	95"
Interior Height	80"	80"	80"
Interior Width	91"	91"	91"
<b>CAPACITIES:</b>			
Fresh Water Tank (Gal.)	52	52	52
Grey Holding Tank (Gal.)	40	40	40
Black Holding Tank (Gal.)	40	40	40
Water Heater w/DSI (Gal.)	6	6	6
LP Gas Tank (lbs.)	85	85/115	85/115
Fuel Tank (Gal.)	80	80	80
Furnace (BTU's)	35K	35K	35K

## NOTES:

## Gas Models

- Electronic Ignition
- Power Steering & Brakes
- High-Capacity Auto. Heater
- Tilt Steering Wheel
- Tag Axle System (8362, 8342)

## Diesel Models

- Spartan EC 2000, 19,000 lb. GVWR Chassis w/Cummins 6BT 5.9, 210HP @2500 RPM 520 ft.lb. Torque @1600 RPM Turbo-Charged Rear Mounted Diesel Engine
- Allison AT-542 4-Speed Automatic Transmission
- Air Over Hydraulic 15" Dia. Front & Rear Disc Brakes w/Air Actuated, Spring-Applied Parking Brake
- Full Air-Ride Suspension
- 275 HP @ 2500 RPM, 605 ft. lb. Torque @ 1700 RPM, Turbo-Charged Rear Mounted Diesel Engine w/6-Speed Allison World Transmission (Opt. on 8313, 8324)

## Deluxe Standard Features

- Auto Dash Air Conditioner
- Auto Cruise Control
- Wheel Covers
- AM/FM Cassette w/4 Spkrs.
- Monitor Panel
- Power Vent in Commode
- Converter w/Battery Charger
- Auxiliary Battery
- 19" Color TV in Front Overhead
- Carbon Monoxide Detector
- TV Antenna
- LP Gas Leak Detector
- Awning Rail

## Popular Options

- Drivers Door (gas models)
- Exterior Radio/Cassette Compartment
- Wood Plank Flooring
- 6-Panel Oak Refrigerator Inlay
- Countertop Extension (formica only)
- Maple Cabinetry Interior
- SVB Package: Upgrade Exterior Graphics, Upgrade Front & Rear Caps, Solid Surface Countertops, Hardwood Flooring And More!

Your Dealer:

For further information and available floorplan options, contact your local dealer or Gulf Stream Coach, Inc. Gulf Stream Coach, Inc. reserves the right to make changes in prices, colors, materials, components and specifications and to discontinue models at anytime without notice or obligation. Gulf Stream Coach, Inc. assumes no responsibility for any error in type or print reproduction of specifications or floorplans in this brochure.  
TP 20M 2/98 © 1998 Gulf Stream Coach, Inc. - Nappanee, Indiana



GULF STREAM COACH, INC.  
P.O. Box 1005 • Nappanee, IN 46550  
Visit our Web Site at:  
[www.GULFSTREAMCOACH.com](http://www.GULFSTREAMCOACH.com)