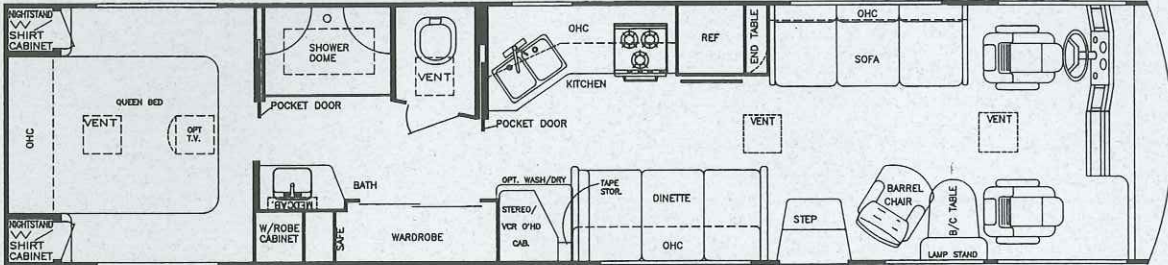


3/95

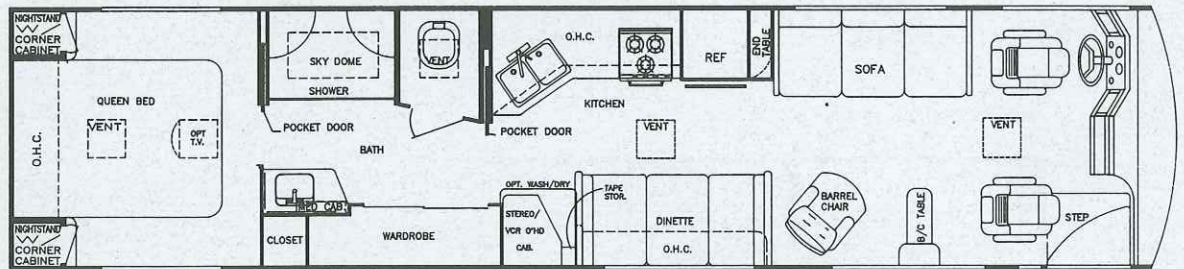
# TourMaster

BY GULF STREAM®

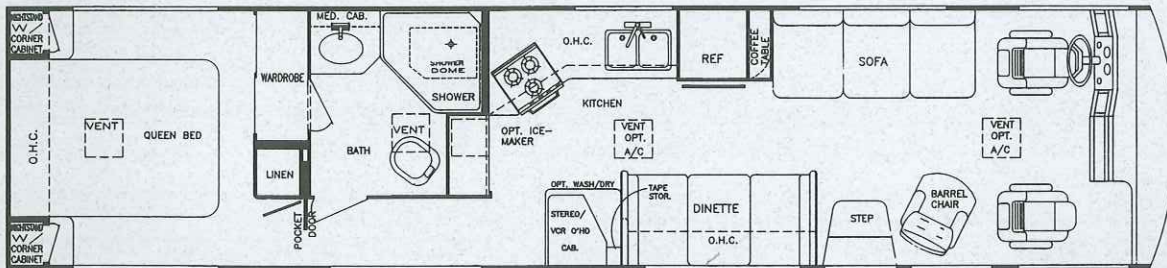
## 102" Wide-Body DIESEL



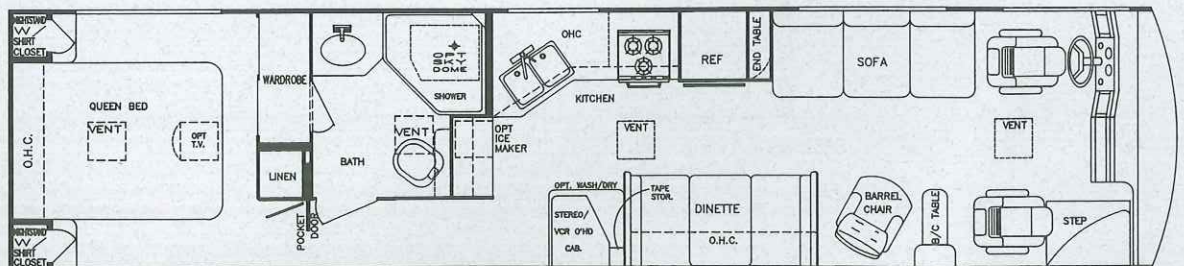
Model 8390 (Side Door Entry)



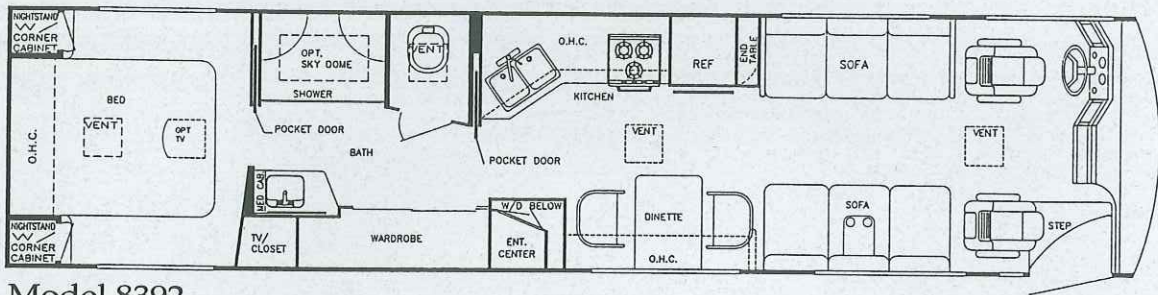
Model 8390 (Front Door Entry)



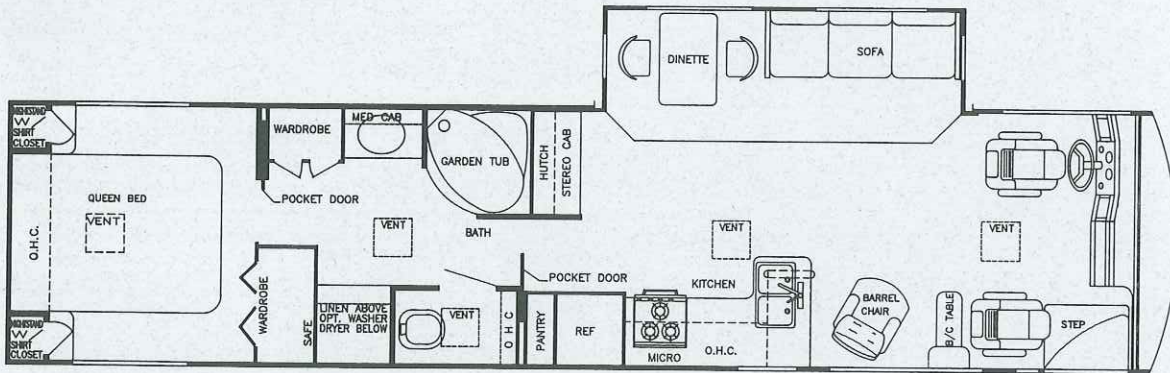
Model 8391 (Side Door Entry)



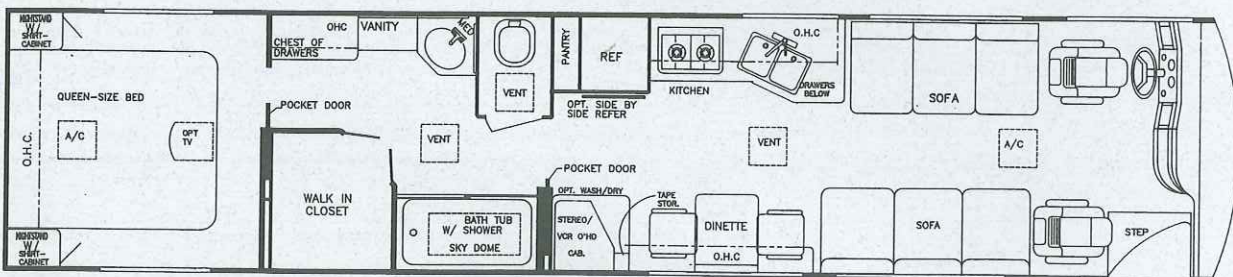
Model 8391 (Front Door Entry)



Model 8392



Model 8393 (Glide-Out Expando)



Model 8400 (Barrel Chairs Available P/O Roadside Sofa)

# TourMaster

BY GULF STREAM®

## 102" Wide-Body DIESEL

### Standard Specifications

#### Interior and Decor

- White Formica Laminated Cabinetry w/ "Thermafoil" Hardwood Doors
- Hand-Rubbed Natural Oak Interior (Optional)
- Laminated Formica Paneling
- Radius Cabinet & Wall Corners
- Fabric-Covered Shelving
- Solid Surface Countertops
- Custom Padded Dash w/Illuminated Gauges
- Deluxe Furniture
- 3-Way Driver & Passenger Seats with Leather Seating Surface
- Deluxe Carpet w/Pad
- Tile Floor in Kitchen
- Day/Night Shades Throughout
- Deluxe Privacy Drapes
- Coordinated Bedspreads & Shams
- Cedar-Lined Wardrobe
- Beveled Glass Decorator Mirrors in Living Area, Bedroom & Bathroom
- Carpeted Ceiling
- "Villa" Leather Driver & Buddy Seat w/Power Foot Rest (Optional, Except for 8400 - Std.)

#### Exterior and Construction

- 1/2" x 1-1/2" Tubular Steel Cage Construction
- Laminated Floors w/Metal Underbelly
- Super-Structure Steel Floor System
- Laminated 2" Thick Floor, Wall & Roof Construction
- R-7.5, 1 1/2" Block Foam Insulation in Floor, Walls & Roof
- Sidewalls Lag-Bolted Every 8" or Less to Floor Structure
- Full Fiberglass Front and Rear Caps
- Fiberglass Integrated Bumpers
- Exterior Entertainment Center (Opt.)
- Fully-Welded Steel Firewall
- Sealed Perimeter & Engine Compartment
- Seamless, One-Piece Radiused Rubber Roof
- Roof Lag-Bolted Every 8" or Less to Sidewalls
- Super-Slick Laminated Fiberglass Siding
- Panoramic One-Piece, Clearview Windshield
- Tinted Windshield & Windows
- Color-Coordinated Paint Scheme w/ Contemporary Painted Graphics & Clear Coat Finish
- Outstanding Side-to-Side, Carpeted, Lighted Exterior Storage
- Back-Up Alarm
- Convenient Rally Hook-Up System

#### Electrical System

- Slide-Out Coach Batteries
- 12-Volt, 75-Amp Converter w/Battery Charger
- Electrical Supply Cord -- 50 Amp (30 Amp Cord on CSA)
- Electric Overload Protection
- Automotive-Type Color-Coded Wiring
- AM/FM Stereo Cassette in Dash
- Lighted Entry Way and Aisle Lights
- Directional Reading and Map Lights
- Positive Battery Shut-Off Switches
- Electric Step
- 7.5 Onan Diesel Generator on Automatic Front Slide-Out Tray
- Optional Deluxe Rack-Mounted Stereo System with CD Player (Std. on 8400)

#### Bath and Water

- Dual Holding Tanks -- Approx. 54 Gal. Each
- Fresh Water Tank -- Approx. 77 Gal.
- Super Flow Manifold Water Distribution System (N/A w/CSA)
- Demand Water System
- City Water Hook-Up
- Double-Bowl Stainless Steel Sink
- Sink Covers
- Shower w/Gold-Tone Shower Stall and Fixtures
- Mirrored Medicine Cabinet
- Gravity Drains on Fresh Water Lines
- 10 Gal. Gas/Electric Water Heater

#### Appliances

- 3-Burner High-Output Range Top (2-Burner on 8400)
- Lighted Power Range Hood
- Large, 2-Way, Flush-Mounted Double-Door Refrigerator
- Side-by-Side, Double-Door 3-Way Refrigerator (Opt.)
- Microwave/Convection Oven
- Residential Telephone
- 19" Color TV w/VCR

#### Heating, Ventilation and Air Conditioning

- 40,000 BTU Furnace w/Residential Duct System
- Two 13,500 BTU Ceiling Ducted Air Conditioners
- 15,000 BTU Front Air Conditioner (Opt.)

#### Spartan Diesel Chassis

- Channel-Type, 8" x 3 1/2" x 1/4", Raised-Rail Frame
- Engine Roll-Out Feature
- Stemco Seals -- Bearings Lubricated w/Oil Instead of Grease
- 14-Gauge Ultra-High Temperature Wire w/Circuit Description Every 3"
- 4-Point V-Pad Engine Mount Greatly Reduces Vibration
- Side-Mounted Rochester Fuel Gauge
- Grau-Midland Anti-Lock Brake System
- Air Brakes w/Midland Pure Air Plus Heated Air Dryer
- Self-Leveling Air Suspension
- Cummins 6 CTA 8.3 Diesel Engine w/ 300 HP, 820 Ft./Lb. Torque
- Turbo Charged and After Cooled
- Allison MD 3060P 6-Speed Electronically Shifted Automatic Transmission
- M11 Chassis (8400 only) Includes: 400 HP, 11 Liter Cummins Engine, w/1350 Ft./Lb. Torque, Allison HD 4060 6-Speed Electronic Transmission, 276" Wheel Base, 11R 22.5 Radial Tires
- Tilt and Telescoping Douglas Steering Column
- High Capacity Automotive Heater
- Four 10-Stud, 11.25 BC Alcoa Aluminum Wheels w/265/75RX225 Radial Tires
- 4.63:1 Rear Axle Ratio
- Wheel Base: 252" (276" on M11 Chassis) Approx. Exterior Length : 39' (40' on 8400)
- Exterior Width -- 102"
- Interior Height -- 6' 8"
- Coach Body Height -- 12' Approx. (w/AC)
- Fuel Tank Approx. 150 Gal.

#### Deluxe Standard Features

- Auto Dash Air Conditioner
- Auto Cruise Control
- Power Vent in Bath
- Auxiliary Batteries
- 115 Lb. LP Tank
- LPG Leak Detector

Your Dealer



**GULF STREAM COACH, INC.**  
P.O. BOX 1005, NAPPANEE, IN 46550

For further information and available floorplan options, contact your nearest dealer or Gulf Stream Coach, Inc. Gulf Stream Coach, Inc. reserves the right to make changes in prices, colors, materials, components and specifications and to discontinue models at any time without notice or obligation. Some items shown may be optional and are not included in the purchase price of the vehicle. Test drive and review a current model on your Gulf Stream dealer's lot today.

10M TP 3/95

# IF YOU WANT A COACH THAT'S BUILT AS WELL AS A GULF STREAM...

1. Seamless Rubber Roof For Greater Energy Efficiency and Dependability.

2. Luan Decking for Additional Strength.

3. Molded E.P.S. Brick Insulation Provides Consistent Insulative Value As Well As Superior Dimensional Rigidity.

4. One-Piece Formed Aluminum Air Conditioning Duct, Completely Surrounded By Polystyrene Insulation.

5. Bubble-Wrapped Foil Insulation Provides Superior Insulation.

6. Rugged Welded Steel Tube Roof Framing.

7. Soft Touch Ceiling Fabric for Added Sound Insulation.

8. Aluminum Cove Molding.

9. Bubble-Wrapped Foil Insulation Minimizes Thermal Transfer.

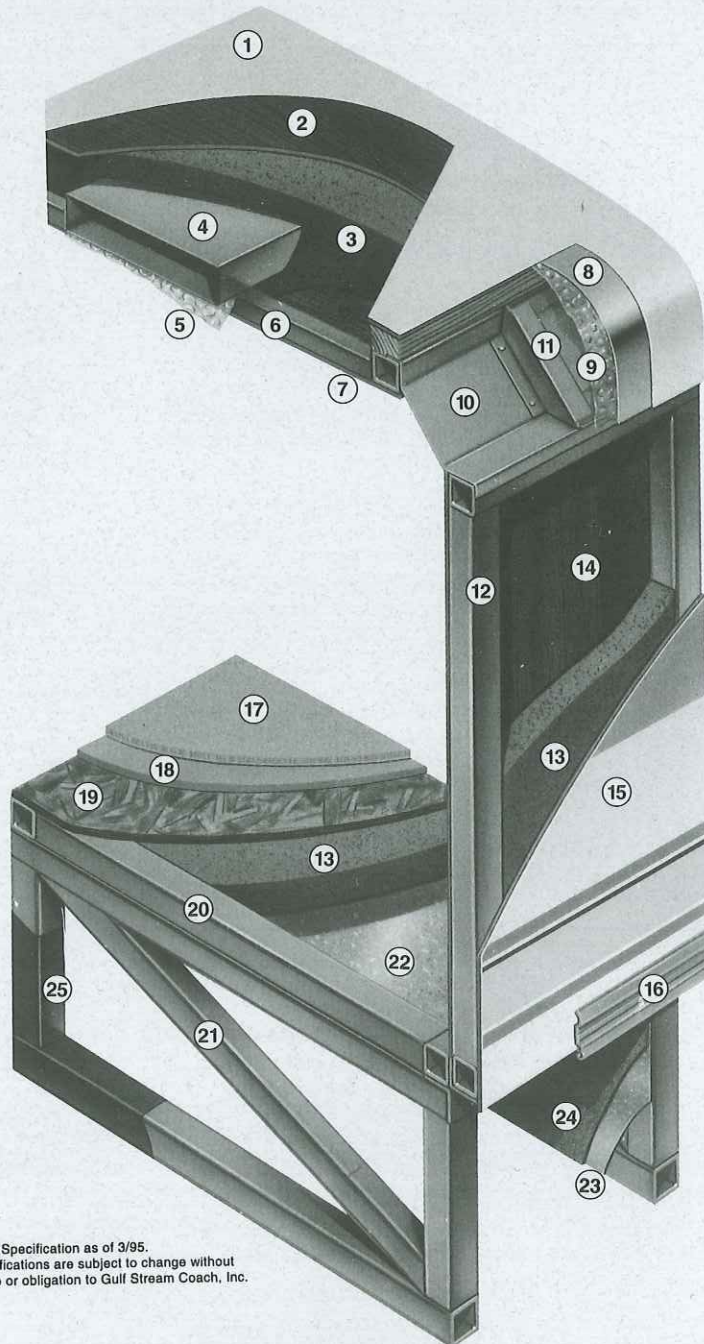
10. Rugged Roll-Formed Steel Roof-to-Sidewall Transition Member Insures Structural Integrity and Stability.

11. Die-Stamped Steel Transition Member Gusseting Provides Greater Strength and Structural Integrity.

12. Rugged Heavy-Gauge Steel Tubing, Fixture Welded to Form the Sidewall Framing.

13. High-Density E.P.S. Insulation Provides Superior Laminating and Bonding Characteristics and Insures Greater Energy Efficiency.

14. Interior Wall Panels Securely Laminated to Steel Framed Sidewall.



Note: Specification as of 3/95. Specifications are subject to change without notice or obligation to Gulf Stream Coach, Inc.

15. "Fiberspan" Fiberglass Exterior Body Surface Vacuum Laminated to Steel Sidewall Framing for Lasting Beauty and Durability.

16. Aluminum Trunk Door Hinge Extrusion Provides A Tight Seal Discouraging Air or Water Infiltration.

17. High-Quality Stain-Resistant Carpeting Available in Designer-Coordinated Colors.

18. Extra-Thick Padding Under Carpet Provides Extra Comfort and Increases Carpet Durability.

19. Continuous Structurewood Floor Decking Laminated to Steel Floor Structure Assures a Quiet, Long-Lasting, Rigid Floor

20. Heavy-Gauge Steel Tube Framing, Fixture Welded for Extra Strength and Stability.

21. Heavy-Gauge Steel Tube Framing, Fixture Welded Floor Truss System Provides the Strongest Motorhome Foundation in the Industry.

22. Seamless Layer of Galvanized Steel Securely Laminated to the Steel Floor Framing.

23. Galvanized Steel Used to Form Each Storage & Holding Compartment.

24. Durable All-Weather Carpeting Completes Each Accessible Storage Compartment, Providing Extra Protection for Luggage and Valuables.

25. Rust-Prohibitive Paint Coating Applied to All Steel Framing Assures Corrosion and Rust Protection.



# IT'S GOING TO HAVE TO BE A GULF STREAM!