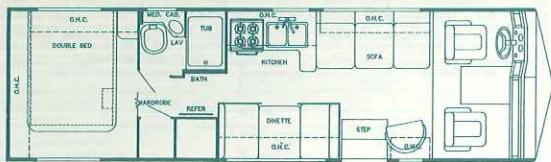


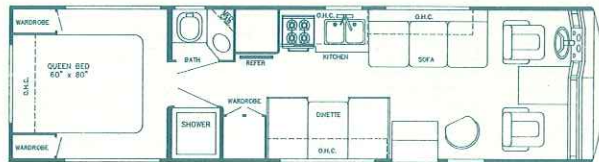


# Sun Stream 2000 by Gulf Stream

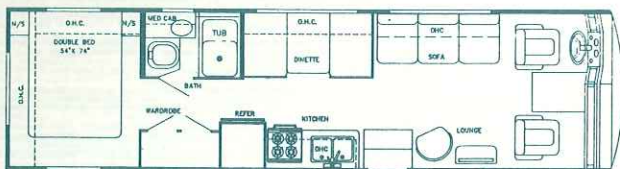


**MODEL 8282**

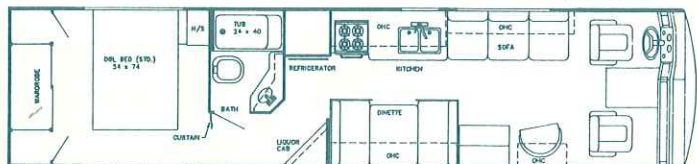
8294GT



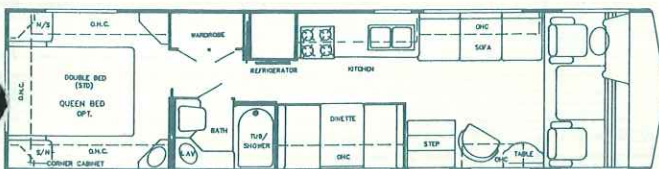
**MODEL 8311**



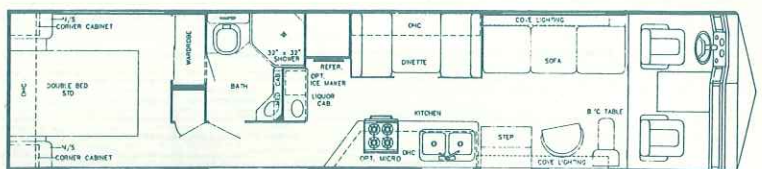
**MODEL 8310**



**MODEL 8343**



**MODEL 8342**



**MODEL 8370**



# Sun Stream 2000 by Gulf Stream

## Standard Specifications

### Interior and Decor

- Oak Paneling & Cabinet Doors
- Wrapped Cabinet Stiles
- Metal Drawer Guides W/Nylon Rollers
- Radius Cabinet & Wall Corners
- Solid Oak Coved Formica Countertop
- Custom, Solid Oak Dash W/Illuminated Gauges
- Windshield Privacy Drape
- Deluxe Furniture
- 3-Way Driver & Passenger Seats
- Deluxe Carpet W/Pad
- Deluxe Door & Window Drapes
- Coordinated Bedspreads & Shams
- Lighted Closets
- Decorator Mirror
- Generous Overhead Storage
- Concealed Storage at Entry
- Extra-Large Under-Bed Storage

### Exterior and Construction

- Unified Steel Body Structure
- Radius Laminated Rubber Roof W/Steel Rafters
- Low Profile Transition Radius Roof, Reinforced W/12-Gauge Truss-Styled Structure
- Impact-Resistant Polyurethane Automotive-Style Bumpers
- Hinged Exterior Storage Doors, Full-Length of Coach
- Hinged Fiberglass Wheel Wells
- Heated & Fully Enclosed Holding Tanks
- Super-Structure Steel Truss-Type Floor System
- Laminated Floors W/Metal Underbelly
- Laminated 2" Thick Floor, Wall & Roof Construction (50% Thicker Than Most Competitors)
- R-7.5 1½" Block Foam Insulation in Floor, Walls & Roof
- Sidewalls Lag-Bolted Every 8" to Floor Structure
- One-Piece Rear Fiberglass Cap
- Fully-Welded Steel Firewall
- Sealed Perimeter & Engine Compartment
- Fiberglass-Impregnated Luan Sidewalls
- Panoramic Windshield
- Tinted Windshield & Windows
- Automotive-Styled Aerodynamic Exterior
- Extraordinary Exterior Storage
- Awning Rail
- Lug Wrench & Jack

### Electrical Systems

- Easy-Access Dual Battery System
- 12-Volt, 45-Amp Converter
- Electric Supply Cord
- Electric Overload Protection
- Generator Compartment
- Automotive-Type Color-Coded Wiring
- Pre-Wired for Stereo Speakers
- Lighted Entry Way & Aisle Lights
- Directional Reading & Map Lights

### Bath and Water

- Dual Holding Tanks — Approx. 100 Gal.
- Fresh Water Tank — Approx. 80 Gal.
- Demand Water System
- City Water Hook-Up
- Double Stainless Steel Sink
- Sink Covers
- Tub/Shower Combination — Most Models
- Marine Toilet
- Mirrored Medicine Cabinet
- Gravity Drains on Fresh Water Lines

### Appliances

- 4-Burner Range
- Lighted Power Range Hood
- Double-Door, 2-Way Refrigerator
- Microwave-Ready

### Heating, Ventilation and Air Conditioning

- 35,000 BTU Ducted Furnace W/Electronic Ignition — Most Models
- Pre-Wired for Roof Air Conditioning

### Deluxe Standard Features

- Exclusive Gulf Stream Special Handling Package (Opt.)
- Driver's Door
- Auto Dash Air Conditioner
- Auto Cruise Control
- Wheel Covers
- AM/FM Cassette W/4 Speakers
- Monitor Panel
- Automatic Emergency Start Switch
- Power Vent in Commode
- Converter W/Battery Charger
- Auxiliary Batteries
- Generator Ready
- 85 Lb. LP Tank

### Chassis

- 454 C.I.D. V-8 Engine
- Super-Duty Ford W/460 V-8 Engine W/4-Speed Automatic Transmission
- Oshkosh Chassis W/460 V-8 Ford Engine (Standard on Most Models)

### Chassis (cont'd)

- 3-Speed Automatic Transmission
- Electronic Ignition
- 4.56:1 Rear Axle Ratio
- 5.13:1 Rear Axle Ratio (Ford Super-Duty Only)
- Power Steering & Brakes
- High Capacity Automotive Heater
- Tilt Steering Wheel
- Wheel Base:
  - Model 8282 — 178"
  - Model 8310 — 190"
  - Model 8311 — 190"
  - Model 8342 — 208"
  - Model 8343 — 208"
  - Model 8370 — 208" W/Tag
- Exterior Length: (Approx.)
  - Model 8282 — 28' (Approx.)
  - Model 8310 — 31'
  - Model 8311 — 31'
  - Model 8342 — 34'
  - Model 8343 — 34'
  - Model 8370 — 37'
- Interior Height — 6'8" (Approx.)
- Coach Body Height — 10'3" (Approx.)
- Exterior Width — 8' (Approx.)
- Approx. 90 Gal. Gas Tank (Oshkosh Chassis)
- Approx. 60/85 Gal. Gas Tank (GM Chassis)
- Approx. 75 Gal. Gas Tank (Ford Super-Duty Chassis)

For further information and available floorplan options, contact your local dealer or Gulf Stream Coach, Inc.

Also ask about our Friendship, Sun Clipper, Sun Stream, Sun Stream Hi-Rise, Sun Sport, Sun Vista, and Regatta Class A motorhomes, Conquest and Ultra Class C mini-motorhomes and micro-mini motorhomes, Kingsley Park fifth wheels, Conquest and Innsbruck travel trailers and fifth wheels and Conquest and Monogram vans.

 **Gulf Stream Coach, Inc.**

P.O. Box 1005 □ Nappanee, Indiana 46550

Gulf Stream Coach, Inc. reserves the right to make changes in prices, colors, materials, components and specifications and to discontinue models at any time without notice or obligation. Gulf Stream Coach, Inc. assumes no responsibility for any error in type or print reproduction of specifications or floorplans in this brochure.

YOUR DEALER

See Reverse Side for Floorplans