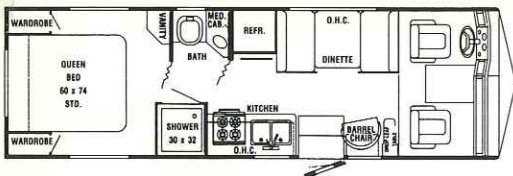


Sun Vista

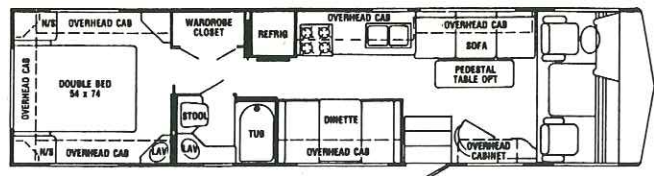
by Gulf Stream Coach



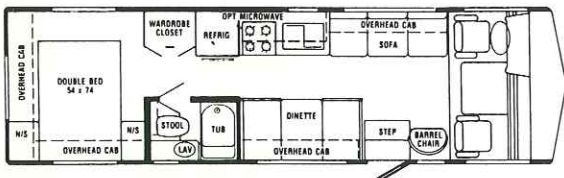
Features Hi-Rise Vista-View Windows
and Outstanding Exterior Storage.



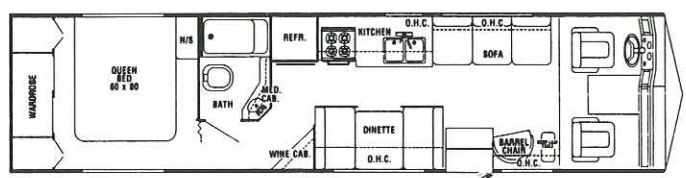
Model 8273-SPHR (Rear Opt.: 1,3)



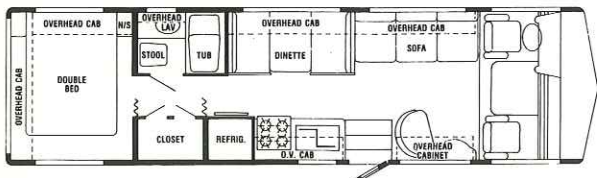
Model 8342-SPHR (Rear Opt.: 1, 3)



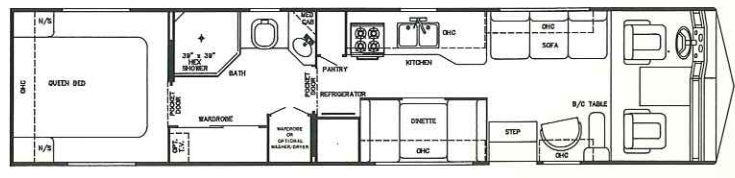
Model 8292-SPHR (Rear Opt.: 1,2,3)



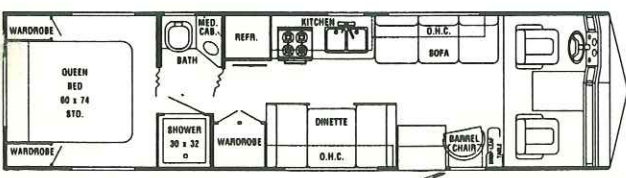
Model 8343-SPHR



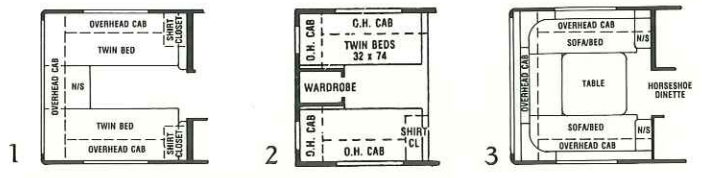
Model 8310-SPHR (Rear Opt.: 1,2,3)



Model 8371-SPHR (Rear Opt.: 1,2,3)



Model 8311-SPHR (Rear Opt.: 2,3)



Floorplan Options - Rear

See reverse side for Standard Specifications

Sun Vista

by Gulf Stream Coach



Standard Specifications

The following items are standard on Sun Vista models:

Interior and Decor

- Self-Edged and Radius-Cornered Countertops
- Custom Padded Dash W/Illuminated Gauges
- Windshield Privacy Drape
- Deluxe Furniture
- 3-Way Driver & Passenger Seats
- Deluxe Carpet W/Pad
- Deluxe Door & Window Drapes
- Coordinated Bedspreads & Shams
- Oak-Framed Decorator Mirror
- Generous Overhead Storage

Exterior and Construction

- Heated & Fully Enclosed Holding Tanks
- Super Structure Steel Truss Type Floor System
- Tubular Steel Cage Construction (16 Gauge, 1 1/2" x 1 1/2")
- Laminated Floors W/Metal Underbelly
- R7.5 1 1/2" Block Foam Insulation in Floor, Walls & Roof
- Fully-Welded Steel Firewall
- Sealed Perimeter and Engine Compartment
- .040" Fiberglass Siding
- Panoramic Windshield
- Tinted Windshield & Windows
- Aerodynamic Exterior
- Outstanding Exterior Storage
- Deluxe Outside Mirrors
- Hi-Rise Vista-View Windows

Electrical Systems

- Easy Access Dual Battery System
- 12-Volt, 45-Amp Converter
- Electric Supply Cord
- Electric Overload Protection
- Generator Compartment
- Automotive-Type Color-Coded Wiring
- Quad Headlight System

Bath and Water

- Dual Holding Tanks - Approx. 100 Gal.
- Fresh Water Tank - Approx. 80 Gal.
- Demand Water System
- City Water Hook-Up
- Double Stainless Steel Sink
- Tub/Shower Combination - Most Models
- Marine Toilet
- Gravity Drains on Fresh Water Lines
- Outside Fresh Water Tank Drain

Appliances

- 4-Burner Range
- Lighted Power Range Hood
- 2-Door, 2-Way Refrigerator
- Microwave Ready

Heating, Ventilation and Air Conditioning

- 31,000 BTU Ducted Furnace W/Electronic Ignition - Most Models
- Pre-Wired for Roof Air Conditioning

Deluxe Standard Features

- Auto Dash Air Conditioner
- Auto Cruise Control
- Roof Rack & Ladder
- Spare Tire
- Wheel Covers
- AM/FM Cassette W/4 Speakers
- Monitor Panel
- Emergency Start Switch
- Power Vent in Bath
- Converter W/Battery Charger
- Generator Ready
- 85 Lb. LP Tank

Chassis

- John Deere Chassis W/460 V-8 Ford Engine Standard on Most Models
- GM 454 C.I.D. V-8 Engine 3-Speed Automatic Transmission Standard on Model 8273; Available on Most Other Models

- Electronic Ignition
- Gasoline Tank - Approx. 90 Gal. (John Deere Chassis) Approx. 60 Gal. (GM Chassis)
- 4.56:1 Rear Axle Ratio
- Power Steering & Brakes
- High Capacity Automotive Heater
- Tilt Steering Wheel
- Wheel Base:
- Model 8273 - 178"
- Model 8292 - 178"
- Model 8310 - 178"
- Model 8311 - 178"
- Model 8342 - 208"
- Model 8343 - 208"
- Model 8371 - 208" plus tag (GM chassis)
- Exterior Length:
- Model 8273 - Approx. 27'
- Model 8292 - Approx. 29'
- Model 8310 - Approx. 31'
- Model 8311 - Approx. 31'
- Model 8342 - Approx. 34'
- Model 8343 - Approx. 34'
- Model 8371 - Approx. 37'
- Interior Height - 6'5"
- Coach Body Height - 10'5"
- Exterior Width - 8'0"

Also ask about our Gulf Stream Classic, Sun Stream, Sun Stream Hi-Rise, Sun Sport and El Capitan and Regatta Class A motorhomes, Conquest and Ultra Class C motorhomes, Conquest and Monogram vans, Innsbruck, Foxfire and Conquest travel trailers and fifth wheels.

 **Gulf Stream Coach, Inc.**

An affiliate of Fairmont Homes, Inc.
P.O. Box 1005 • Nappanee, Indiana 46550

Gulf Stream Coach, Inc. reserves the right to make changes in prices, colors, materials, components and specifications and to discontinue models at any time without notice

or obligation. Gulf Stream Coach, Inc. assumes no responsibility for any error in type or print reproduction of specifications or floorplans in this brochure.